



WinLaC Partnership — 1W1P —

Date: October 5, 2022

To: Local Governmental Units in the WinLaC One Watershed, One Plan (1W1P) Planning Area (see map below)

From: Winona County acting on behalf of the WinLaC Partnership Policy Committee

Re: Draft of the Mississippi River Winona/La Crescent (WinLaC) Comprehensive Watershed Management Plan

At their October 3rd, 2022 meeting, the WinLaC One Watershed, One Plan Policy Committee authorized the release of the draft ten-year comprehensive watershed management plan for the Mississippi River Winona/La Crescent watersheds. This plan was developed by the WinLaC Partnership under the One Watershed, One Plan (1W1P) Program and establishes a 60-day review period consistent with 1W1P operating procedures.

The comprehensive watershed management plan includes the Whitewater River watershed, Garvin Brook watershed, the La Crescent watershed and several small tributaries draining directly into the Mississippi River (see map). The planning area covers 750 square miles in four counties (Houston, Olmsted, Wabasha and Winona). This Plan was developed cooperatively by the County Boards and Soil and Water Conservation Districts in each of the four counties, along with the Stockton-Rollingstone-Minnesota City Watershed District and the City of Winona.

Draft Plan:
[WinLaC-1W1P-for-60-day-review \(winona.mn.us\)](https://winona.mn.us/WinLaC-1W1P-for-60-day-review)

Appendices:
[WinLaC-Appendices-for-60-day-review \(winona.mn.us\)](https://winona.mn.us/WinLaC-Appendices-for-60-day-review)

Information about the planning process is also available on the WinLaC Partnership webpage:
<https://bit.ly/WinLaC1W1P>

Please submit any comments before **December 5th, 2022**, and direct inquiries to:

Sheila Harmes, Winona County Water Planner
202 West Third Street
Winona, MN 55987
507-457-6522
Email Address: sharmes@co.winona.mn.us

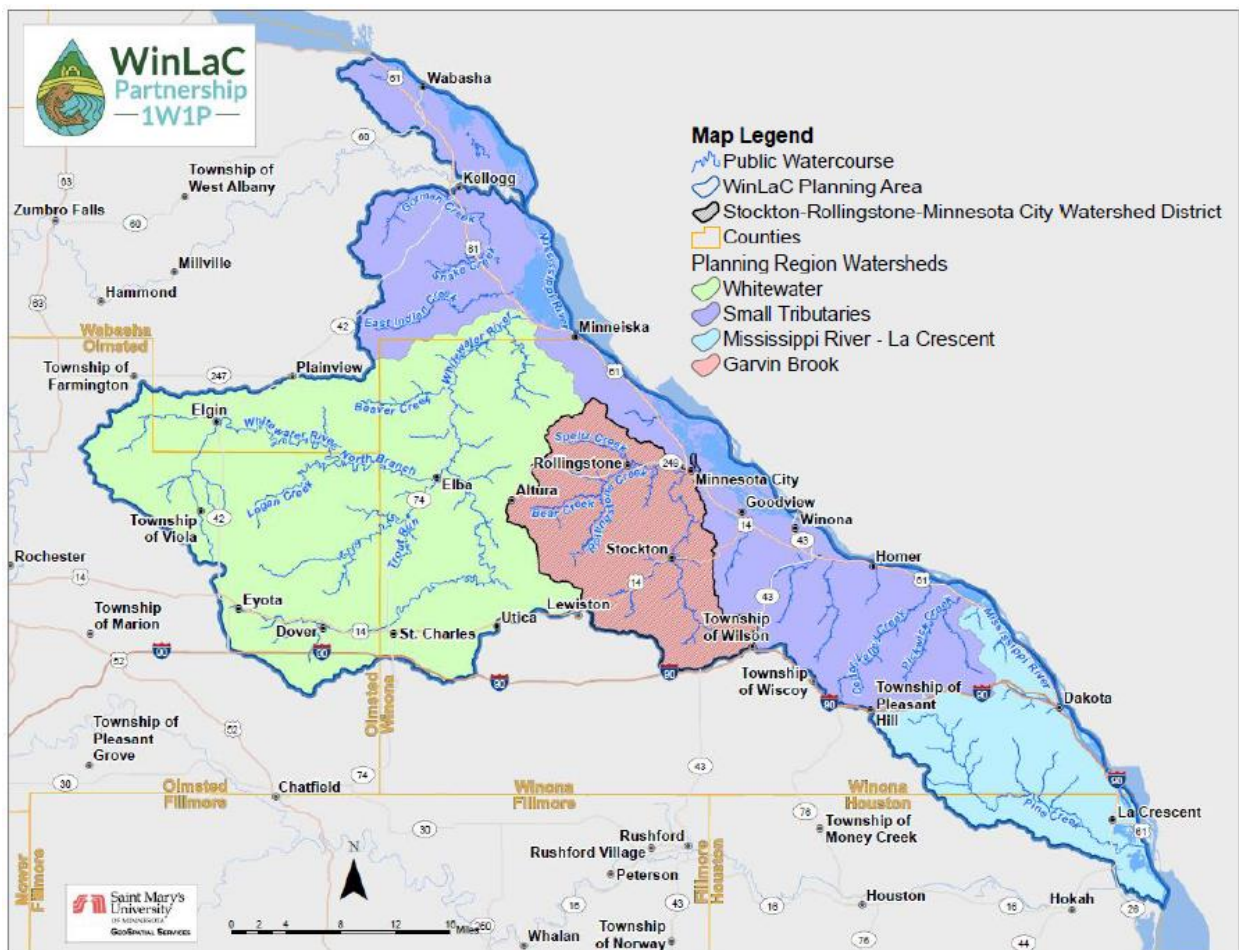
Comments from state review agencies should also be copied to the Board of Water and Soil Resources (BWSR) Board Conservationist, **Adam Beilke** at adam.beilke@state.mn.us

A public hearing on the Comprehensive Watershed Management Plan will be held in January 2023. Additional information will be distributed when plans are finalized.

On behalf of the Partnership members, thank you.

WinLaC Partnership:

- | | |
|----------------|---|
| Houston County | Root River Soil and Water Conservation District |
| Olmsted County | Olmsted Soil and Water Conservation District |
| Wabasha County | Wabasha County Soil and Water Conservation District |
| Winona County | Winona County Soil and Water Conservation District |
| City of Winona | Stockton-Rollingstone-Minnesota City Watershed District |



WinLaC (Mississippi River-Winona/La Crescent) planning area: 479,700 acres

Whitewater River Watershed = 205,000 acres (42%)

Garvin Brook Watershed = 63,000 acres (13%)

Mississippi River-La Crescent Watershed = 60,500 acres (13%)

Small Tributaries = 151,200 acres (32%)

Winona Co – 58%, Wabasha Co – 20%, Olmsted Co – 18%, Houston Co – 4%